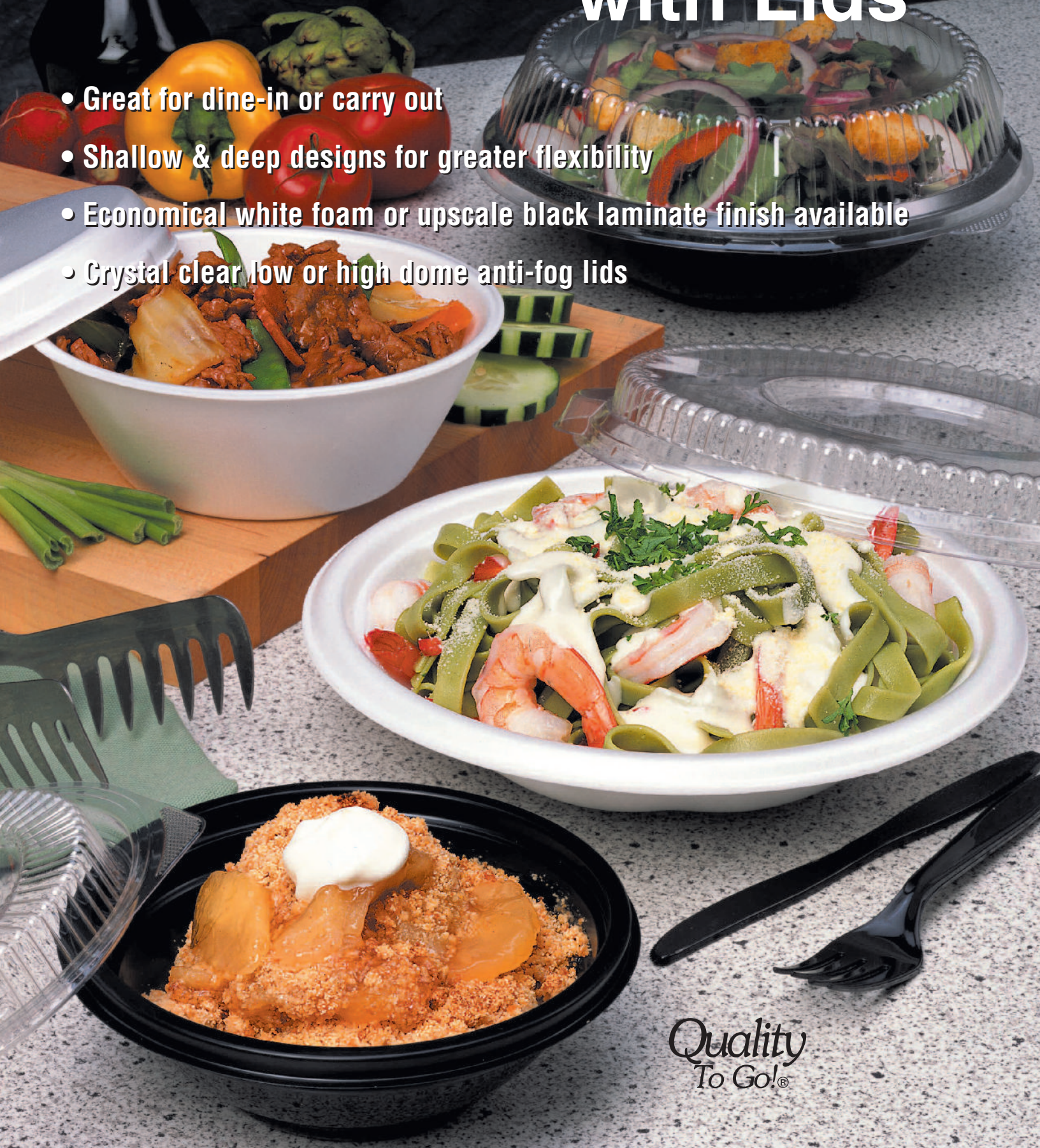


Foam and Laminated Foam







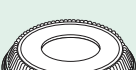


 **Genpak**[®]

Utility Bowls with Lids

- Great for dine-in or carry out
- Shallow & deep designs for greater flexibility
- Economical white foam or upscale black laminate finish available
- Crystal clear low or high dome anti-fog lids



*Quality
To Go!*[®]

Stock Number	Description	Units Per Case	Pounds Per Case	Cube Per Case
LW016-3L 	16 oz. Laminated Foam Bowl 9" x 1"	400	6.0	2.6
FW024 	24 oz. Foam Bowl 9" x 1½"	400	8.6	4.1
LW024-3L 	24 oz. Laminated Foam Bowl 9" x 1½"	400	7.8	3.6
FW032 	32 oz. Foam Bowl 9" x 2"	400	8.9	4.2
LW032-3L 	32 oz. Laminated Foam Bowl 9" x 2"	400	10.0	4.0
LW932* 	8 7/8" Lid Fits 16, 24 & 32 oz Foam & Laminated Foam Bowls Height-1/4"	200	12.2	2.6
LW878* 	8 7/8" Lid Fits 16, 24 & 32 oz Foam & Laminated Foam Bowls Height-1 1/4"	200	12.2	2.8
RB024 	24 oz. Rice Bowl 6½" x 2"	300	4.6	1.9
RB924 	Foam Lid, Fits 24 oz. Rice Bowl	300	3.8	2.8

*Lid contains up to 40% Post-Consumer Recycled Plastic

